

Navesink Country Club

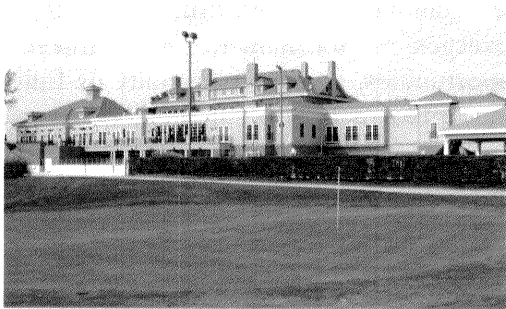
Designed by Hal Purdy in 1963

Host of the 1987 & 1988 LPA Chrysler-Plymouth Classic

Located in central Monmouth County, New Jersey. It is 25 miles south of New York City and minutes from the New Jersey shoreline.

In addition to the golf course, NCC has:

NCAA Regulation Hockey / Skating Rink
6 Har-Tru Tennis Courts
4 Paddle Tennis Courts
Outdoor Swimming Pool
\$11 Million Recent Clubhouse Renovation



Navesink Country Club is a family oriented private country club located on the Navesink River. We pride ourselves on exceptional membership service and satisfaction.

Navesink Country Club



50 Luffburrow Lane
P.O. Box 100
Middletown, NJ 07748
Phone: (732) 842 - 4910
Fax: (732) 219 - 1971
E-mail: bscales@navesinkcc.com



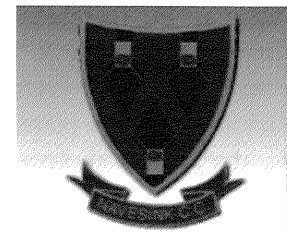
Navesink Country Club



Internship Opportunities



Navesink Country Club



Opportunities

Internships and employment at Navesink Country Club are what you make of them. The experience and hands-on learning environment will be vital in your pursuit to be a successful superintendent.



Needle-tine aeration of greens

While at Navesink, interns will play an integral role in all golf course agronomic practices: These include:

Calibration and application of fertilizers and chemicals, irrigation repair, maintenance, and installation, operation of turf equipment, water syringing, and leading small projects.

In addition to standard maintenance and cultivation practices, Navesink will be undertaking several large projects in the near future. Included in the plans are: an expansion of the irrigation system, tree removal, bunker renovation, greens expansion, drainage installation, and construction of a new maintenance facility.

Interns are encouraged to ask questions and utilize the knowledgeable staff to better prepare themselves for a future in the turfgrass industry.

What's Navesink looking for?

Currently there are 4 internship positions to be filled, but please respond as soon as possible as these positions will fill quickly. We are looking for interns that can stay 6 months, but are also willing to consider shorter durations.

Housing

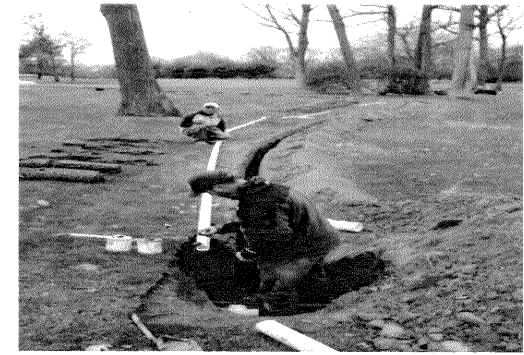
Housing is provided for interns, free of charge.

Pay

\$10 -12 per hour DOE with overtime



Ongoing drainage projects.



Irrigation installation in the fall / winter

Hours

Employees must be dedicated and motivated to work extensive hours throughout the summer.

Benefits

Benefits include: housing, lunch from the clubhouse, uniforms, golfing privileges, tournament volunteer opportunities, and the possibility of full time employment upon graduation.

Send resumes to:

Brett Scales – Golf Course Superintendent.

Navesink Country Club

PO Box 100

50 Luffburrow Lane

Middletown, NJ 07748

Phone # (732) 842 - 4910

Fax # (732) 219 - 1971

E-mail: bscales@navesinkcc.com

January 14, 2011

Dr. Joseph Anderson
Department of Agronomy
Purdue University
915 West State Street
West Lafayette, IN 47907

Dear Dr. Joseph Anderson:

My name is Brett Scales and I am the golf course superintendent at Navesink Country Club, a high-end private country club located in Monmouth County, New Jersey. We are looking to hire several collegiate students who are currently enrolled in a turfgrass program for a summer internship, and have the utmost respect for the turf curriculum established at Purdue University.

The summer internship entails 50-60 hour weeks, a pay rate of \$10-12 hour, free housing accommodation, meals provided by the club when working, uniforms, golfing privileges, and the potential for full time employment upon graduation.

I would greatly appreciate you posting the enclosed brochure on one of the student news bulletin in the agronomics building. If any of your students are interested, the application process is self explanatory on the brochure, and they can also gather more information at the website www.navesinkcc.com.

Sincerely,



Brett Scales

Brett Scales, Golf Course Superintendent
Navesink Country Club
PO Box 100
50 Luffburrow Lane
Middletown, NJ 07748
Phone # (732) 842 – 4910
Fax # (732) 219 – 1971
Email: bscales@navesinkcc.com