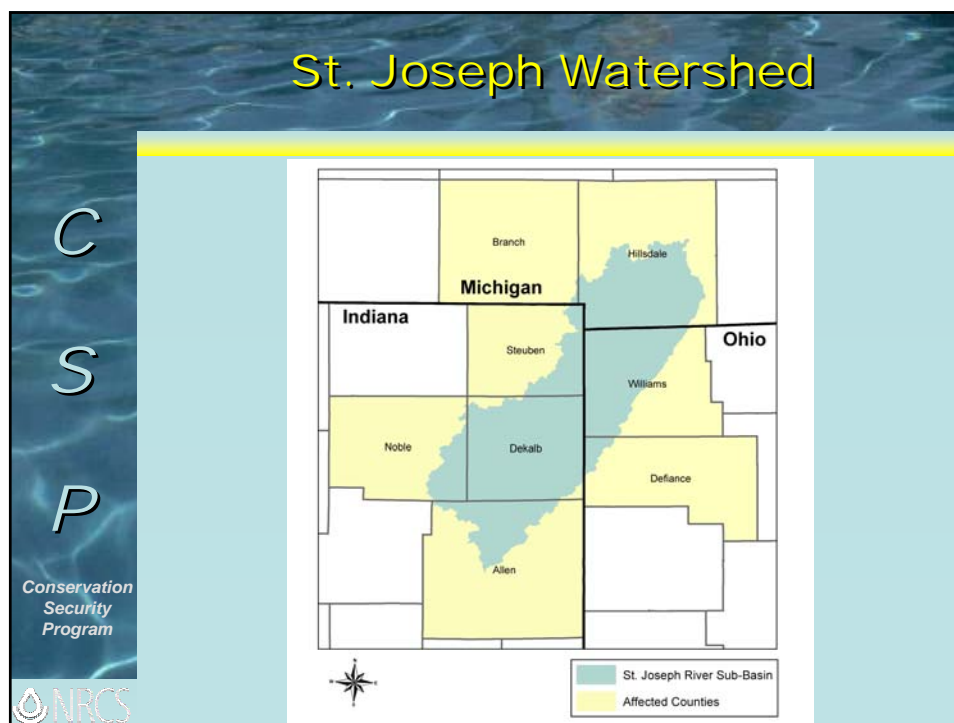


Watershed Selection Criteria

- High-priority resource issues to be addressed
- History of good land stewardship
- Availability of necessary technical tools
- Wide variety of land uses and input intensities

CSP
Conservation
Security
Program
NRCS



CSP Rewards Stewardship

C
S
P

Conservation
Security
Program









CSP Has 3 Tier Structure

C
S
P

Conservation
Security
Program



Tier	Resources Treated	Scope
Tier 1	Water & soil quality	Part of the operation
Tier 2	Water & soil quality	Entire operation
<i>Plus:</i> <i>Agree to address one other resource concern</i>		
Tier 3	All resources	Entire operation
<i>Plus:</i> <i>Agree to additional activities</i>		

CSP Eligibility Requirements

C
S
P

Conservation
Security
Program

- Majority of operation within priority watershed
- In compliance with HEL/wetland provisions
- Active interest in operation
- Control of land for life of contract
- Privately owned or tribal lands
- Applicant shares risk and is entitled to share of crops/livestock

 NRCS

CSP Eligibility Requirements

C
S
P


Conservation
Security
Program

Non-eligible lands include:

- Land in Conservation Reserve, Wetlands Reserve, or Grasslands Reserve Program (These lands can be used to document existing practices but are not eligible for CSP payment.)
- Recently converted cropland
- Forestland


 NRCS

CSP Application Process – Producer Actions

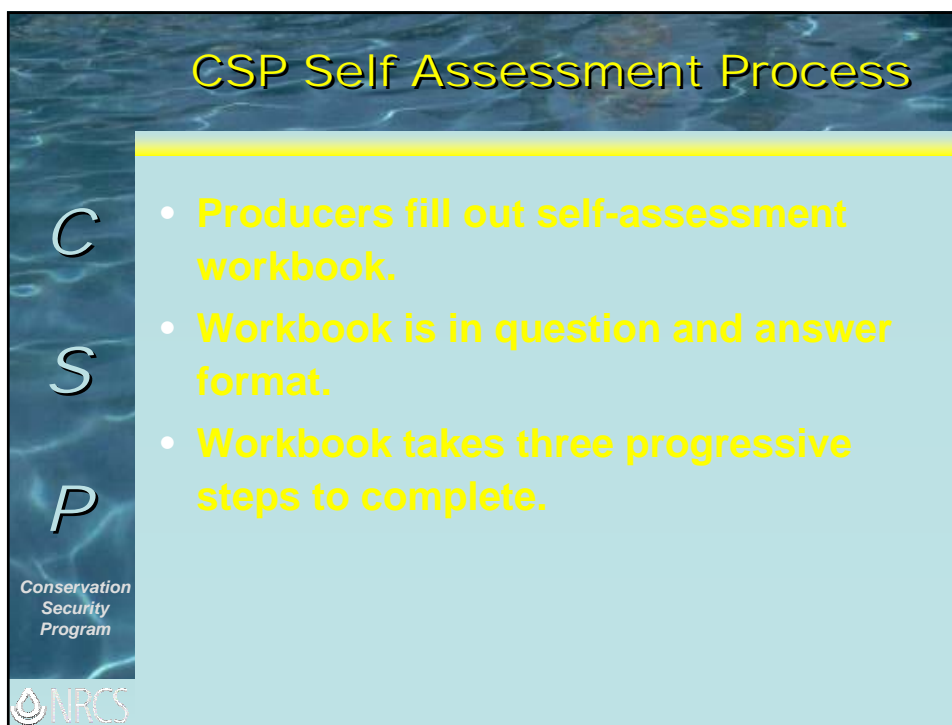
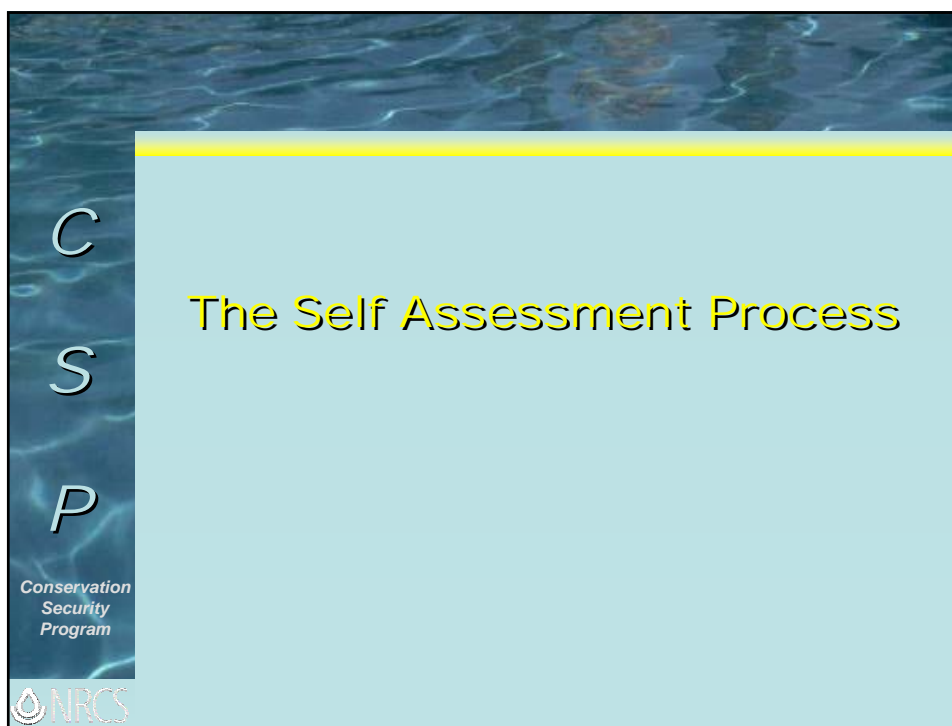


- **Completes self-assessment workbook, determines eligibility, and documents stewardship to date**
- **Contacts NRCS District Conservationist to schedule interview during sign-up between July 6-30.**
- **Brings completed workbook and supporting documentation to interview**

CSP Application Process – NRCS Actions



- **Schedules interview appointment with producer**
- **Reviews self-assessment workbook and supporting documentation**
- **Determines enrollment category**
- **Selects categories to be funded**
(NRCS National Headquarters)




Self Assessment Workbook

C
S
P
Conservation
Security
Program

Available in Three Formats:

- Paper workbook
- Self-starting CD-ROM workbook
- Interactive Internet workbook on-line at <http://csp.sc.egov.usda.gov/>

 NRCS


Topics of the 3 Step Self Assessment Process

C
S
P
Conservation
Security
Program

Step 1
Determine initial eligibility for producer/landowner and land.

Step 2
Assess land use.

Step 3
Describe your operation.

 NRCS

Step 1 - Determine Producer and Land Eligibility

C
S
P

Conservation
Security
Program

Determine Producer Eligibility

- Answer questions only for the land, or portion of land, that you wish to enroll in the CSP.
- Answer all questions with “yes,” “no,” or “na” for not applicable.
- Underlined terms are defined in the glossary, computer versions of self-assessment have clickable links highlighted with an underline.

 NRCS


Step 1 - Determine Producer and Land Eligibility

C
S
P

Conservation
Security
Program

Question 1 - Page 4


“Do you share in the risk of producing crops or livestock on this operation?”

 NRCS

Step 1 - Determine Producer and Land Eligibility

C
S
P

Conservation
Security
Program

 NRCS


Glossary Definition - Page 37

“See share in the risk.... The term producer means an owner, operator, landlord, tenant, or sharecropper that materially participates and shares in the risk of producing any crop or livestock; and is entitled to share in the crop or livestock available for marketing from a farm (or would have shared had the crop or livestock been produced).”

Step 1 - Determine Producer and Land Eligibility

C
S
P

Conservation
Security
Program

 NRCS

Question 3 - Page 4

“Do you have control of some or all of the land you manage for the life of the proposed 5 to 10 year contract period?”

Step 1 - Determine Producer and Land Eligibility

C
S
P
Conservation
Security
Program
NRCS

Glossary Definition - Page 26


“The CSP participant does not need to own eligible land, but must demonstrate control of the land for the life of the CSP contract through ownership, a lease, or proof of a long-standing relationship as determined by NRCS. If the applicant is a tenant, the applicant must provide NRCS with the written evidence or assurance of control from the landowner.”

Step 1 - Determine Producer and Land Eligibility


C
S
P
Conservation
Security
Program
NRCS

- **Review your answers and compare to the list at the end of the section.**
- **If your answers differ from the listed answers, you may not qualify for the CSP.**
- **The internet version of the self-assessment will immediately notify you of ineligibility if you answer in a manner that disqualifies you from participation.**

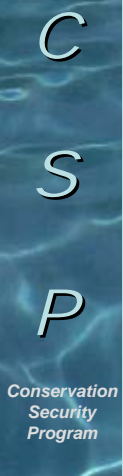
Step 1 - Determine Producer and Land Eligibility




- If you answered “no” to any question except Question 8, you must redefine your operation or you are not eligible.
- Any questions?
- Proceed to Step 2.



Step 2 - Assess Land Use



- There are 4 types of land use eligible for CSP
 1. Cropland (including Hayland), Vineyards, or Orchards
 2. Pastureland
 3. Rangeland
 4. Farmstead or Headquarters
- Answer questions for each land use you wish to enroll.



Step 2 - Assess Land Use

C

Question 1 -

Page 7

S

P

Conservation
Security
Program



“Do you keep written records or documentation of your nutrient management activities for each field, such as yields, soil analysis, plant tissue analysis, and nutrients applied—including animal waste?”

Step 2 - Assess Land Use

C

Glossary Definition -

Page 39

S

P

Conservation
Security
Program



“Field diaries and logs which may include names, rates, and dates of application of all fertilizers, manures, composts and pesticides.”

Note - You must have 2 years of written records to qualify for CSP.

Step 2 - Assess Land Use

C

Question 10 -

Page 8

S

P

Conservation
Security
Program



“Are you following a pest management plan or schedule that includes, as needed, insects, invasive species, and weeds?”

Step 2 - Assess Land Use

C

Glossary Definition -

Page 34

S

P

Conservation
Security
Program



“Utilizing environmentally sensitive prevention, avoidance, monitoring and suppression strategies, to manage weeds, insects, diseases, animals and other organisms (including invasive and non-invasive species), that directly or indirectly cause damage or annoyance.”

Step 2 - Assess Land Use

C

S

P

Conservation
Security
Program



Question 13 -

“Do you grow high residue crops at least 1 in 3 years in rotation, or use a cover crop annually, and/or have hay/pasture in rotation?”

Step 2 - Assess Land Use

C

S

P

Conservation
Security
Program



Glossary Definition - Page 30

“Crops that produce and leave high levels (> 3000 lbs per acre) of biomass in the field after crop harvest. High residue crops can include corn, small grains, hay and other crops expected to produce adequate crop residue for soil improvement and protection from erosion. The crop aftermath is left to protect the soil.”

Step 2 - Assess Land Use

C

S

P

Conservation
Security
Program



- If you answered “no” to any question you must redefine your operation or you are not eligible.
- Any questions?
- Proceed to final Self Assessment Step 3.

Step 3 - Describe Your Operation

C

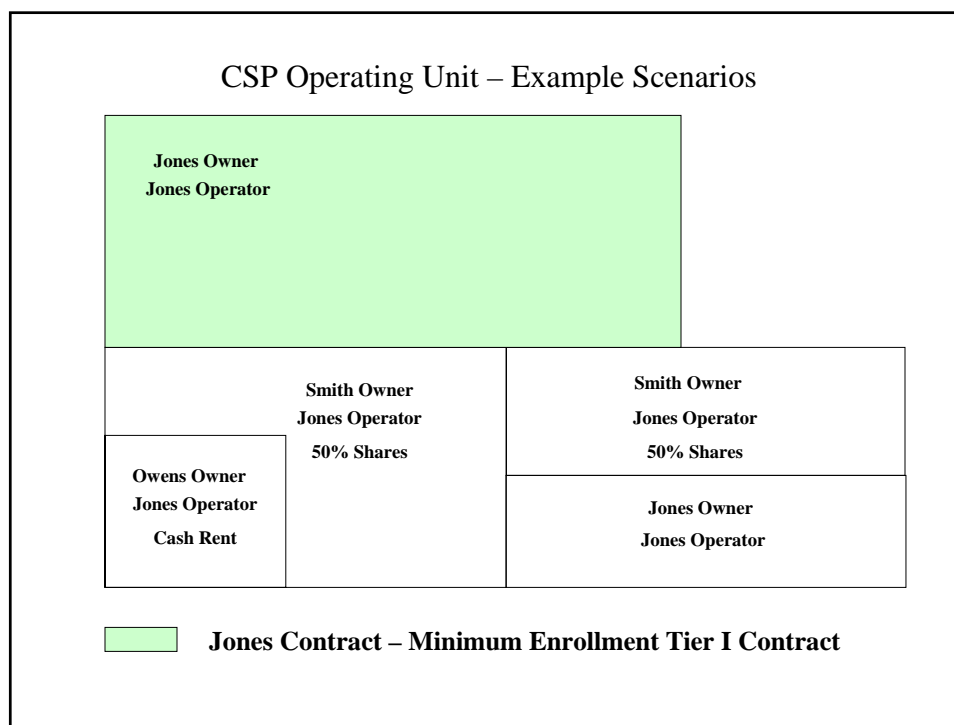
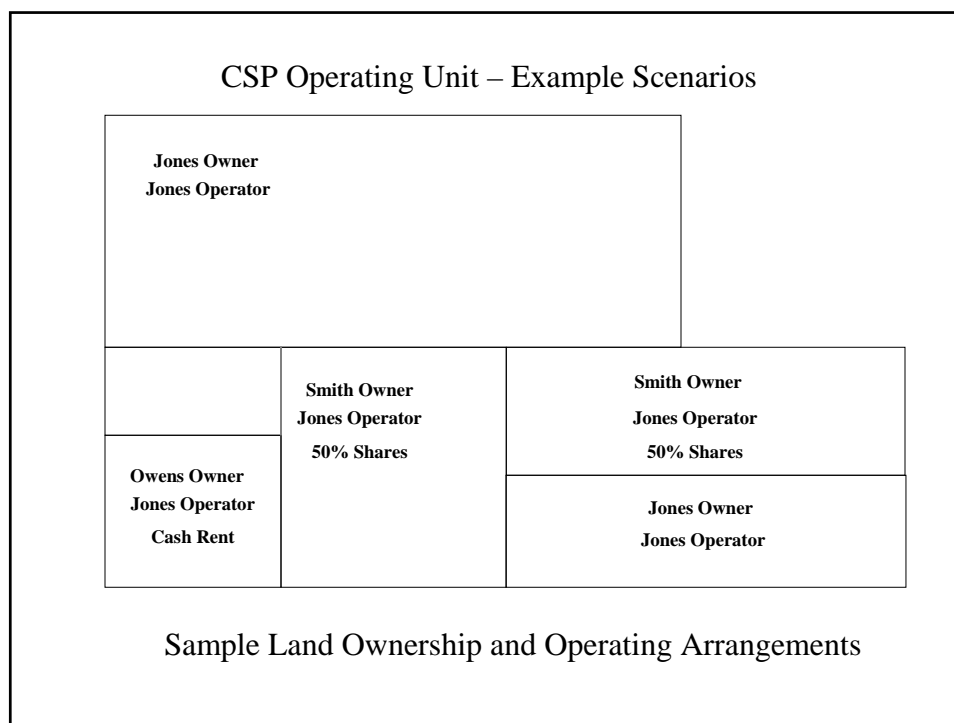
S

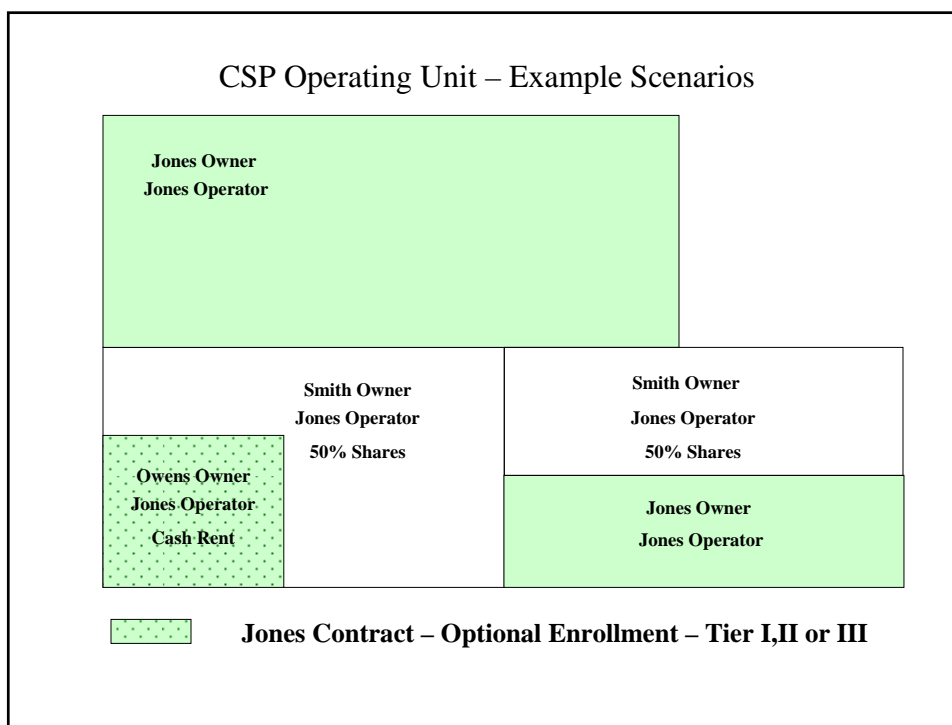
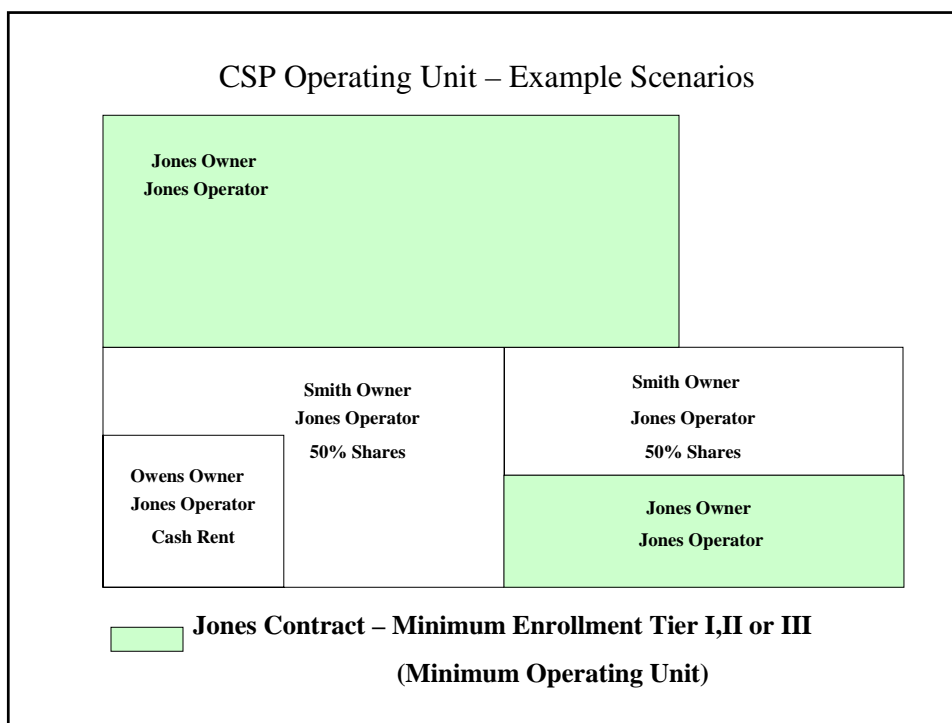
P

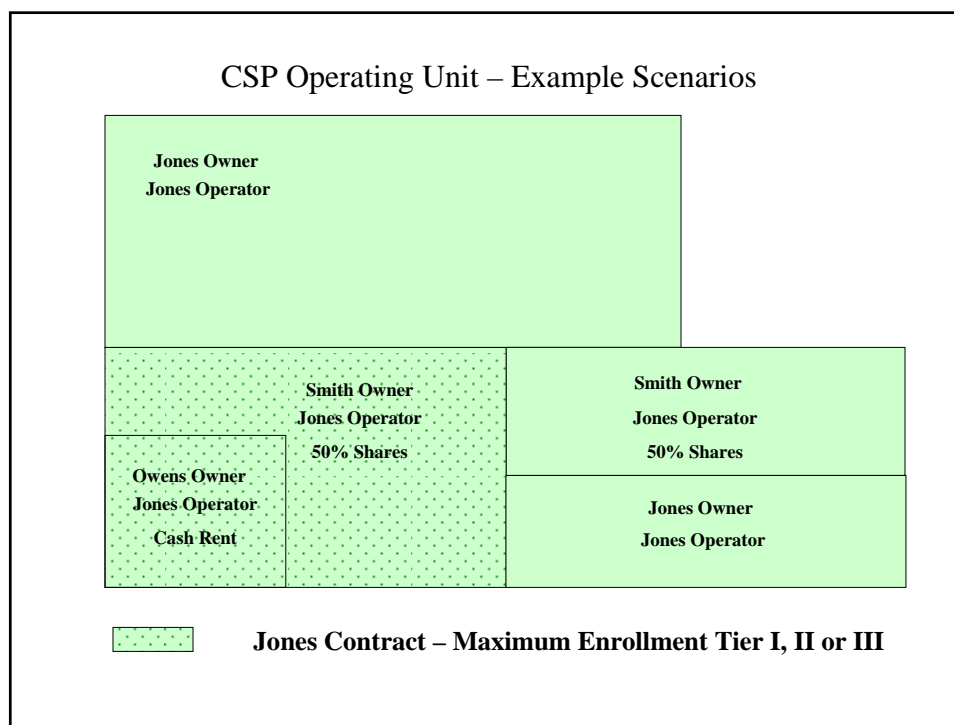
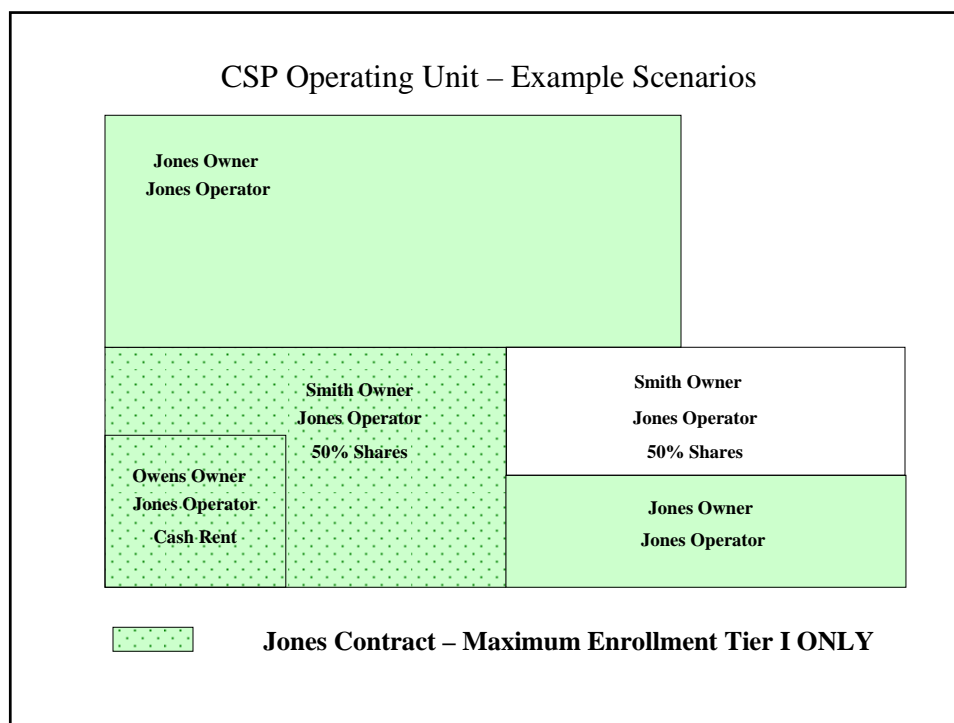
Conservation
Security
Program



- Step 3 asks you to “Describe the fields or portion of your farm or ranch that you are proposing for CSP.”







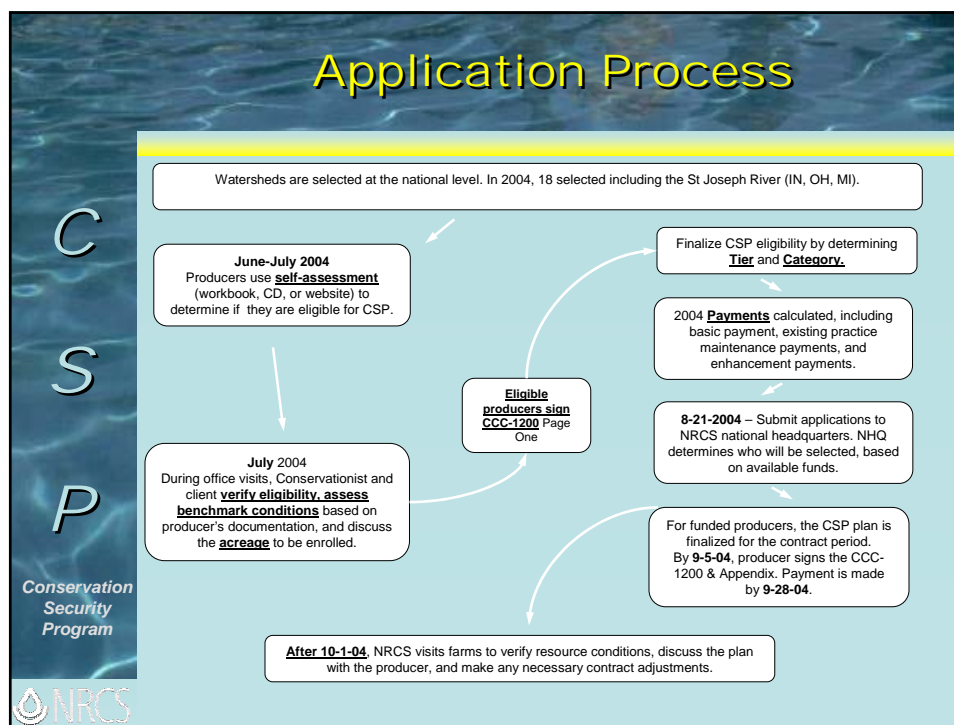
Step 3 - Determine Producer and Land Eligibility

- Any questions?

C
S
P

Conservation
Security
Program

NRCS



Application Process

C
S
P

- **Documents to bring to the interview:**
 - The workbook
 - Handouts provided by NRCS
 - FSA form 1026a
 - Aerial photos of land offered

Conservation
Security
Program

Example CSP Payment Cropland – 500 acres

C
S
P

Tier 1	Stewardship & Existing Practice	\$ 766 / yr
	Enhancement Practices	\$ 10,000 / yr
Tier 2	Stewardship & Existing Practice	\$ 3,063 / yr
	Enhancement Practices	\$ 17,500 / yr
Tier 3	Stewardship & Existing Practices	\$ 6,891 / yr
	Enhancement Practices	\$ 22,500 / yr

Conservation
Security
Program

